

IKA®

Shakers



German technology
made in the USA

3D Shakers | World in motion!

For over a century, IKA® has been leading the way with innovative technologies and applications in the field of laboratory, analytical and process equipment.

In 1925, IKA® first produced the conventional shaker and displayed this entire product line at ACHEMA. To give our loyal customers a leading edge, IKA® has ensured that new product innovation has been introduced time and time again. And once again, IKA® has completely revamped its' shaker line by incorporating advanced technology with unique designs. As always, we continue our 100 year old tradition of bringing design, innovation, ease of use and commitment to our customers!

IKA® already has a line of well known and proven orbital and horizontal shakers. IKA® is proud to introduce a brand new series of Rollers, Rockers and Overhead Rotators. The wide range of Rocking, Rolling, Rotating and Shaking covers the entire spectrum of motions in mixing technology. All new devices are available in a basic and digital version. IKA® has also added a sibling to its' voluminous incubator shaker KS 4000 i control and ic control. The expanded product range facilitates the use of our equipment in a wider range of applications, especially in the medical and biological field. The hallmark of IKA®, exceptional design, innovation, quality, high efficiency, smooth operation and excellent performance continues as it has for 100 years!



3 Year warranty*

* 2+1 years after registering at www.ika.com/register, glassware and wearing parts excluded


Protection class according to DIN EN 60529: IP 21





2D & 3D Rockers | Enhanced dimensions, Smaller footprints!


2D & 3D Rockers accessories




 Touch keypad for easy operation


 Three-dimensional tumbling rocking/see-saw motion

 C/T button for choosing the counter or the timer function

 Two-dimensional rocking/see-saw motion

 2+1 Year warranty*
2+1 years after registering at www.ika.com/register

 Timer Display for accurate and reproducible conditions

 Dual platform option expands workspace



The brand new range of 2D and 3D Rockers provide gentle rocking/see-saw action and are used for homogenous mixing in flasks, culture flasks, Petri dishes and tubes. The compact, small footprint and dual platform saves valuable bench space and facilitates easy-handling. Even with load and voltage fluctuations, shaking speeds remain constant. Precision in speed (available in fixed and variable) and adjustable tilt angle allow for a variety of applications.



TB 1 Tray
28 x for tubes 5 ml, Ø 12 mm

②

Ident. No.
4532200

\$ 43



TB 2 Tray
16 x for tubes 15 ml, Ø 16 mm
"standard 15 ml tubes"

Ident. No.
4532300

\$ 43

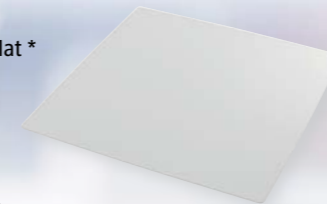


RD 1 Mat *

Ident. No.
4532000

\$ 13

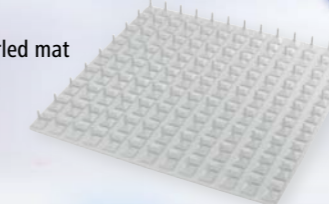
* Included in the delivery.



RD 2 Burled mat

Ident. No.
4532100

\$ 17



TB 3 Tray

14 x for tubes 30 ml, Ø 25 mm
"standard 30 ml tubes"

Ident. No.
4532400

\$ 43

①



IKA+

Special universal mat available to accommodate various kinds of vessels for maximum flexibility!

A 2 Second level attachment

For use with Rocker 2D, 3D basic and digital

Ident. No.
4581700

\$ 76



TB 4 Tray

10 x for tubes 30 ml, Ø 28 mm
"standard 50 ml tubes"

Ident. No.
4532500

\$ 43



Rollers | Smart and safe mixing!



Timer display for accurate and reproducible conditions



C/T button for choosing the counter or the timer function



2+1 years after registering at www.ika.com/register



Touch keypad for easy operation



Gentle mixing applications demand smooth rocking and rolling action. Our 6 and 10 Rollers, operated at fixed and infinitely adjustable speed deliver this requirement efficiently. Easily removable attachments provide for quick cleaning in case of sample spills. Removable rollers allow for the use of larger tubes. Truly, a Rock n' Roll experience in the laboratory!

Rocking and Rolling action

IKA+



Rollers | Accessories



IKA+

Easily removable rolls allow the use of larger tubes.

① SH Shield*

Ident. No.
4013500

* Included in the delivery.



Loopster | Spin your Loop!



Timer Display
Timer display for accurate and reproducible conditions

Choice of tube holders to hold a number of different sized tubes

90°
90 degree adjustable mixing angle

2+1
2+1 years after registering at www.ika.com/register
Year warranty*

Touch keypad for easy operation

C/T button for choosing the counter or the timer function



Rotate your samples smoothly and effectively, at fixed or infinitely variable speeds with freely adjustable rotary angles. Ideal for biological samples, particularly blood samples and also suitable for separating and mixing of powdered and liquid samples in multiple tube sizes as large as 50 ml conical tubes. Easily removable attachments provide for quick cleaning in case of sample spills.

Loopster | Accessories

Ident. No. 4524000		DS 1 Tube attachment 48 x 1.5 ml microcentrifuge tubes; Ø 10 mm	\$ 165	Ident. No. 4524600		DS 6.1 Spare clips 48 x 1.5 ml, Ø 10 mm, 10 pieces	\$ 7
Ident. No. 4524100		DS 2 Tube attachment 24 x 5 ml tubes, Ø 12 mm	\$ 165	Ident. No. 4524700		DS 6.2 Spare clips 24 x 5 ml tubes, Ø 12 mm, 10 pieces	\$ 7
Ident. No. 4524200		DS 3 Tube attachment 20 x 15 ml centrifuge tubes, Ø 16 mm	\$ 165	Ident. No. 4524800		DS 6.3 Spare clips 20 x 15 ml, Ø 16 mm, 10 pieces	\$ 7
Ident. No. 4524300		DS 4 Tube attachment 12 x 30 ml, Ø 25 mm	\$ 165	Ident. No. 4524900		DS 6.4 Spare clips 12 x 30 ml, Ø 25 mm, 10 pieces	\$ 7
Ident. No. 4524400		DS 5 Tube attachment 12 x 50 ml centrifuge tubes, Ø 28 mm	\$ 165	Ident. No. 4525000		DS 6.5 Spare clips 12 x 50 ml, Ø 28 mm, 10 pieces	\$ 7



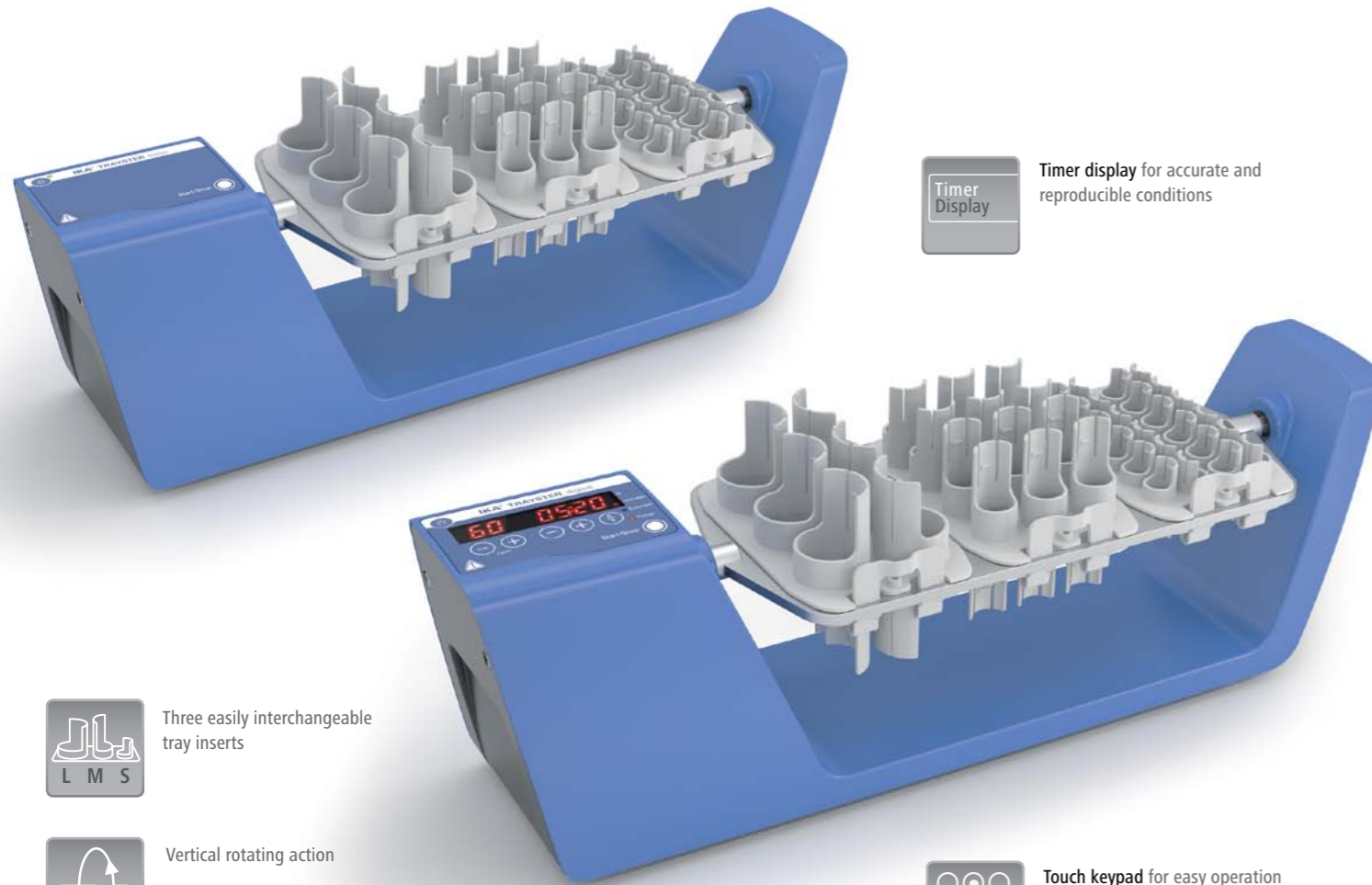
DS 6 Universal disc*
Single tube attachment for holding five different kinds of tubes for greater versatility.

Ident. No. 4524500 **\$ 136**

* Not included in the delivery.

IKA+
To get customized and additional accessories, please visit www.ika.com/service

Trayster | Swirl your way to perfect mixing!



Timer Display
Timer display for accurate and reproducible conditions

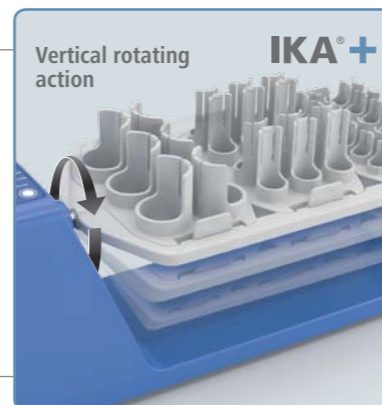
L M S
Three easily interchangeable tray inserts

Vertical rotating action

2+1
Year warranty*
2+1 years after registering at www.ika.com/register

Touch keypad for easy operation

C/T button for choosing the counter or the timer function



Overhead shakers with vertical rotating action for smooth and effective mixing at fixed or infinitely adjustable speed. Ideal for biological samples, particularly blood and suitable for the separating and mixing of powdered and liquid samples in tubes of up to 50 ml. Easily removable attachments provide for quick cleaning in case of sample spills.

Trayster | Accessories

TR 1 Tube insert
24 x 1.5 ml microcentrifuge tubes; Ø 10 mm
Ident. No. 4525100 \$ 48

TR 2 Tube insert
24 x 5 ml tubes, Ø 12 mm
Ident. No. 4525200 \$ 48

TR 3 Tube insert
12 x 15 ml centrifuge tubes, Ø 16 mm
Ident. No. 4525300 \$ 48

TR 4 Tube insert
6 x 50 ml centrifuge tubes, Ø 28 mm
Ident. No. 4525400 \$ 48

* All the above accessories not included in the delivery.

Incubator shakers | KS 3000 i / ic control



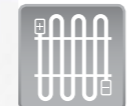
Large LED display for speed, temperature and timer



Assure highly accurate temperature control



2+1 years after registering at www.ika.com/register



Built-in cooling coil for connection to an external cooling unit (available only for KS 3000 ic control)



USB interface to control and document all parameters using labworldsoft® software and for updating your firmware



Wide range of attachments allows for using almost all shapes and sizes of vessels




The KS 3000 series is the latest addition to the incubator shaker family. These sleek, compact, high-performance shakers are designed for safe, unattended operation in a temperature-controlled environment. Additionally, KS 3000 ic control is equipped with a built-in cooling coil for connection to an external cooling unit. Precise temperature control makes the incubator shaker a reliable asset in every lab, ensuring quiet, vibration-free and reliable operation - an excellent device for controlled mixing!



Accessories | KS 3000 i / ic control


AS 260.1	
Dimensions (W x D x H)	425 x 335 x 135 mm
Set-up plate	320 x 320 mm
Weight	1600 g



Ident. No. 8017400 **\$ 226**

AS 260.1 Universal attachment
For various types of vessels. Infinitely variable clamping rolls allow universal adaptation to the vessels.
Included with delivery:
1 x AS 1.60 Basic holder,
4 x AS 1.61 Clamping roll,
8 x AS 1.5 Fastening screw

AS 260.3	
Dimensions (W x D x H)	410 x 370 x 32 mm
Set-up plate	320 x 320 mm
Weight	460 g



Ident. No. 3120600 **\$ 124**

AS 260.3 Dish attachment
For smooth movement for cell cultures, nutrient media in Petri dishes, culture bottles and vessels with a low center of gravity. With integrated slip-resistant foil (PP).


STICKMAX		
Dimensions (W x D x H)	200 x 200 mm	
Permissible ambient temperature	5 – 80 °C	
Max. speed	300 rpm	
Number of adhesive mats per shaker	KS 130	1 pcs.
	KS/HS 260	3 pcs.
	KS/HS 501	4 pcs.
	KS 3000 i	2 pcs.
	KS 4000 i	4 pcs.

labworldsoft®
labworldsoft® is a multi-purpose software program for measuring, controlling and regulating laboratory devices.



Ident. No. 4720000 **\$ 453**


AS 260.2	
Dimensions (W x D x H)	330 x 330 x 24 mm
Number of fixing clips (volume)	56 x AS 2.1 (25 ml) 23 x AS 2.2 (50 ml) 23 x AS 2.3 (100 ml) 11 x AS 2.4 (250 ml) 9 x AS 2.5 (500 ml) 5 x AS 2.6 (1000 ml)
Weight	1290 g



Ident. No. 3115500 **\$ 159**

AS 260.2 Fixing clip attachment
For shaking flasks, Erlenmeyer flasks and bottles with a round cross-section (without fixing clips).
Accessories:
Fixing clips: AS 2.1, AS 2.2, AS 2.3, AS 2.4, AS 2.5

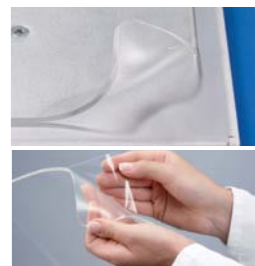
AS 260.5	
Dimensions (W x D x H)	334 x 425 x 145 mm
Capacity: (number of separating funnels per volume, pear-shaped)	6 x 50 ml 5 x 100 ml 3 x 250 ml 3 x 500 ml
Weight	1550 g



Ident. No. 3120900 **\$ 679**

AS 260.5 Separating funnel attachment
For shaking out, salting out, extracting, eluting and enriching. The 3 clamping rolls (included in delivery) are height-adjustable for adaption to different separating funnel sizes. The separating funnels are secured with O-rings (6 O-rings included).

STICKMAX
Universal adhesive mat for KS 130, KS/HS 260, KS/HS 501, KS 3000 and KS 4000 shakers.



Ident. No. 3920000 **\$ 109**

PC 1.1 Cable
RS-232 cable 2, 9-pin, M/F, 3 m.

Ident. No. 2616700 **\$ 166**

3D Shakers | Technical data



Rocker 2D basic | digital



Rocker 3D basic | digital



Loopster basic | digital

Technical data	
Type of movement	rocking
Shaking diameter	8° (angle) 2.5 – 15° (angle)
Permissible shaking weight (incl. attachment)	2 kg
Motor rating input / output	16 / 9 W
Permissible ON time	100%
Speed range	5 – 80 rpm
Speed display	7 segment LED
Timer	no ∞ / 1 s – 99.9 h
Timer display	none 7 segment LED
Operating mode	continuous operation timer and continuous operation
Dimensions (W x D x H)	280 x 330 x 150 mm
Weight	2.2 kg
Permissible ambient temp.	4 – 50 °C
Permissible relative moisture	80%
Protection class acc. to DIN EN 60529	IP 21
Interface	no
Voltage	100 – 240 V
Frequency	50/60 Hz
DC Voltage	24 V

Price \$ 687 | \$ 784

Rocker 2D basic: Ident. No. 4002000

Rocker 2D digital: Ident. No. 4003000

Rocker 3D basic: Ident. No. 4000000

Rocker 3D digital: Ident. No. 4001000

Loopster basic: Ident. No. 4015000

Loopster digital: Ident. No. 4016000



Trayster basic | digital



Roller 6 basic | digital



Roller 10 basic | digital

Technical data	
Type of movement	rotating
Shaking diameter	vertical or horizontal
Permissible shaking weight (incl. attachment)	2 kg
Motor rating input / output	16 / 9 W
Permissible ON time	100%
Speed range	20 rpm (fixed) 5 – 80 rpm
Speed display	none 7 segment LED
Timer	no ∞ / 1 s – 99.9 h
Timer display	none 7 segment LED
Operating mode	continuous operation timer and continuous operation
Dimensions (W x D x H)	460 x 160 x 150
Weight	1.7 kg
Permissible ambient temp.	4 – 50 °C
Permissible relative moisture	80%
Protection class acc. to DIN EN 60529	IP 21
Interface	no
Voltage	100 – 240 V
Frequency	50/60 Hz
DC Voltage	24 V

Price

\$ 634 | \$ 719

Trayster basic: Ident. No. 4005000

Trayster digital: Ident. No. 4006000

Roller 6 basic: Ident. No. 4010000

Roller 6 digital: Ident. No. 4011000

Roller 10 basic: Ident. No. 4012000

Roller 10 digital: Ident. No. 4013000

Incubator shakers | Technical data



KS 3000 i control | ic control



KS 4000 i control | ic control

Technical data	
Type of movement	orbital
Orbital diameter	20 mm
Permissible shaking weight (incl. attachment)	7.5 kg
Motor rating input / output	45 / 10 W
Power input	1120 W
Permissible ON time	100%
Speed range	10 – 500 rpm
Speed display	LED
Timer	yes
Timer display	LED
Time setting range	1 s – 999 h
Operating mode	timer and continuous operation
Heating temperature range	RT +5 – 80 °C RT -10 – 80 °C
Heat output	1000 W
Temperature display	LED
Temp. stability (0.2 l H ₂ O; RT 25°C, T = 37°C)	± 0.1 K
Dimensions (W x D x H)	465 x 430 x 695 mm
Weight	35 kg 37 kg
Permissible ambient temperature	15 – 32 °C
Permissible relative moisture	80%
Protection class acc. to DIN EN 60529	IP 30
Interface	RS 232, USB
Voltage	115 V
Frequency	50/60 Hz

Price

\$ 4,897 | \$ 6,122

KS 3000 i control: Ident. No. 3940001

KS 3000 ic control: Ident. No. 3940101



\$ 7,255 | \$ 7,968

KS 4000 i control: Ident. No. 3510001

KS 4000 ic control: Ident. No. 3510101

Shakers | Technical data

		
MS 3 basic digital	lab dancer	VORTEX 3
Technical data		
Type of movement	orbital	orbital
Shaking diameter	4.5 mm	4 mm
Permissible shaking weight (incl. attachment)	0.5 kg	max. 50 ml (1 test tube)
Motor rating input / output	10 / 8 W	1.2 / 0.8 W
Permissible ON time	100%	100%
Speed range	0 – 3000 rpm	2800 rpm (fixed)
Speed display	scale digital	none
Timer	no ∞ / 1 s – 999 min	no
Timer display	none digital	none
Operating mode	continuous / touch operation timer and continuous / touch operation	touch operation
Dimensions (W x D x H)	148 x 205 x 63 mm	100 x 70 mm (Ø x H)
Weight	2.9 kg	0.55 kg
Permissible ambient temp.	5 – 40 °C	5 – 40 °C
Permissible relative moisture	80%	80%
Protection class acc. to DIN EN 60529	IP 21	IP 40
Interface	no	no
Voltage	100 – 240 V	100 – 240 V
Frequency	50/60 Hz	50/60 Hz
Price	\$ 449 \$ 513	\$ 281
	MS 3 basic: Ident. No. 3617000	Ident. No. 3365000
	MS 3 digital: Ident. No. 3319000	

		
VORTEX 1	VORTEX 4 basic digital	VXR basic Vibrax®
Technical data		
Type of movement	orbital	orbital
Shaking diameter	4.5 mm	4.5 mm
Permissible shaking weight (incl. attachment)	0.1 kg	0.5 kg
Motor rating input / output	1.2 / 0.8 W	10 / 8 W
Permissible ON time	100%	100%
Speed range	1000 – 2800 rpm	0 – 3000 rpm
Speed display	none	scale digital
Timer	no	no ∞ / 1 s – 999 min
Timer display	none	no digital
Operating mode	touch operation	continuous / touch operation timer and continuous / touch operation
Dimensions (W x D x H)	95 x 110 x 70 mm	176 x 190 x 63 mm
Weight	4.5 kg	3 kg
Permissible ambient temp.	5 – 40 °C	5 – 40 °C
Permissible relative moisture	80%	80%
Protection class acc. to DIN EN 60529	IP 40	IP 21
Interface	no	no
Voltage	100 – 240 V	100 – 240 V
Frequency	50/60 Hz	50/60 Hz
Price	\$ 329	\$ 474 \$ 513
	Ident. No. 4047700	VORTEX 4 basic: Ident. No. 4049600
		VORTEX 4 digital: Ident. No. 4050100

		
MTS 2/4 digital Microtiter shaker	KS 130 basic control	KS 260 basic control
Technical data		
Type of movement	orbital	orbital
Shaking diameter	3 mm	4 mm
Permissible shaking weight (incl. attachment)	2 or 4 microtiter plates	2 kg
Motor rating input / output	35 / 13.2 W	45 / 10 W
Permissible ON time	100%	100%
Speed range	0 – 1100 rpm	80 – 800 rpm
Speed display	scale	LED line digital
Timer	∞ / 1 – 99 min	∞ / 5 – 50 min ∞ / 0 – 9 h 59 min
Timer display	digital	LED line digital
Operating mode	timer and continuous operation	timer and continuous operation
Dimensions (W x D x H)	185 x 320 x 105 mm	270 x 316 x 98 mm
Weight	2.7 kg	8.8 kg
Permissible ambient temp.	5 – 40 °C	5 – 50 °C
Permissible relative moisture	80%	80%
Protection class acc. to DIN EN 60529	IP 21	IP 21
Interface	no	no RS 232
Voltage	115 V	115 V
Frequency	50/60 Hz	50/60 Hz
Price	\$ 1,318	\$ 1,504 \$ 2,278
	Ident. No. 3208001	KS 130 basic: Ident. No. 2980001
		KS 130 control: Ident. No. 2980101
		KS 130 control (without end point positioning): Ident. No. 4278201
		KS 260 basic: Ident. No. 2980201
		KS 260 control: Ident. No. 2980301
		KS 260 control (without end point positioning): Ident. No. 4278401

Shakers | Technical data

Accessories | KS 4000 i / ic control



KS 501 digital

Technical data

Type of movement	orbital
Shaking diameter	30 mm
Permissible shaking weight (incl. attachment)	15 kg
Motor rating input / output	70 / 19 W
Permissible ON time	100%
Speed range	0 – 300 rpm
Speed display	digital
Timer	∞ / 1 – 56 min
Timer display	digital
Operating mode	timer and continuous operation
Dimensions (W x D x H)	505 x 585 x 120 mm
Weight	26 kg
Permissible ambient temp.	5 – 50 °C
Permissible relative moisture	80%
Protection class acc. to DIN EN 60529	IP 21
Interface	no
Voltage	115 V
Frequency	50/60 Hz

Price \$ 5,546

Ident. No. 2526401



HS 260 basic | control

reciprocating	reciprocating
20 mm	30 mm
7.5 kg	15 kg
45 / 10 W	70 / 19 W
100%	100%
20 – 300 rpm 10 – 300 rpm	0 – 300 rpm
LED line digital	digital
∞ / 5 – 50 min ∞ / 0 – 9 h 59 min	∞ / 1 – 56 min
LED line digital	digital
timer and continuous operation	timer and continuous operation
360 x 420 x 100 mm	505 x 585 x 120 mm
8.5 kg 8.8 kg	26 kg
5 – 50 °C	5 – 50 °C
80%	80%
IP 21	IP 21
no RS 232	no
115 V	115 V
50/60 Hz	50/60 Hz

Price \$ 2,254 | \$ 2,704

HS 260 basic: Ident. No. 3066601

HS 260 control: Ident. No. 3066701

HS 260 control (without end point positioning): Ident. No. 4278601



HS 501 digital

reciprocating	reciprocating
30 mm	30 mm
15 kg	15 kg
70 / 19 W	70 / 19 W
100%	100%
0 – 300 rpm	0 – 300 rpm
digital	digital
∞ / 1 – 56 min	∞ / 1 – 56 min
digital	digital
timer and continuous operation	timer and continuous operation
505 x 585 x 120 mm	505 x 585 x 120 mm
26 kg	26 kg
5 – 50 °C	5 – 50 °C
80%	80%
IP 21	IP 21
no	no
115 V	115 V
50/60 Hz	50/60 Hz

Price \$ 5,421

Ident. No. 2527001

AS 4000.1	
Dimensions (W x D x H)	470 x 447 x 135 mm
Set-up plate	380 x 410 mm
Weight	3200 g

AS 1.401	
Length	417 mm

AS 4000.2	
Dimensions (W x D x H)	470 x 444 x 25 mm
Number of fixing clips (volume)	50 x AS 2.1 (25 ml) 48 x AS 2.2 (50 ml) 25 x AS 2.3 (100 ml) 16 x AS 2.4 (250 ml) 12 x AS 2.5 (500 ml) 7 x AS 2.6 (1000 ml)
Set-up plate	430 x 430 mm
Weight	2650 g

AS 4000.3	
Dimensions (W x D x H)	470 x 444 x 25 mm
Set-up plate	430 x 430 mm
Weight	800 g

AS 1.400	
Dimensions (W x D x H)	446 x 447 x 135 mm



Ident. No. 8022200

AS 4000.1 Universal attachment
For use with various types of vessels. Infinitely variable clamping rolls allow universal adaptation to the vessels.
Included with delivery:
1 x Basic holder, 6 x Clamping roll, 12 x Fastening screw

\$ 1,788



Ident. No. 3712000

AS 1.401 Clamping roll
Spare for use with universal attachment AS 4000.1.

\$ 77



Ident. No. 3712300

AS 1.402 Fastening screw
Spare for use with universal attachment AS 4000.1. Two AS 1.402 fastening screws are required for fastening a clamping roll onto the corresponding basic holder.

\$ 19



Ident. No. 3710100

AS 4000.2 Fixing clip attachment
For shaking flasks, Erlenmeyer flasks and bottles with a round cross section (without fixing clips).

\$ 928



Ident. No. 3710000

AS 4000.3 Dish attachment
For smooth shaking operations in the low viscosity range, e.g. for cell cultures, nutrient media in Petri dishes, culture bottles and vessels with a low center of gravity. With integrated slip-resistant foil (PP).

\$ 275



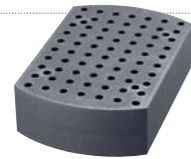
Ident. No. 3710200

AS 1.400 Basic holder
Spare for use with universal attachment AS 4000.1

\$ 631

Accessories | VXR basic

VX 11.1	
Bore holes (number)	70
Hole Ø	10 mm



Ident. No. 3659000 \$ 234

VX 11.1 Test tube insert
Attachment for Eppendorf tubes or test tubes.

VX 11.2	
Bore holes (number)	41
Hole Ø	12 mm



Ident. No. 3659100 \$ 234

VX 11.2 Test tube insert
Attachment for test tubes.

VX 11.3	
Bore holes (number)	32
Hole Ø	16 mm



Ident. No. 3659200 \$ 199

VX 11.3 Test tube insert
Attachment for test tubes.

VX 11.4	
Bore holes (number)	18
Hole Ø	20 mm

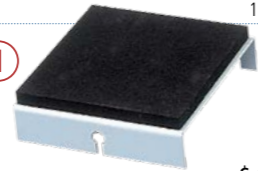


Ident. No. 3659300 \$ 199

VX 11.4 Test tube insert
Attachment for test tubes.

VX 1	
Dimensions (W x D x H)	130 x 135 x 40 mm
Weight	160 g

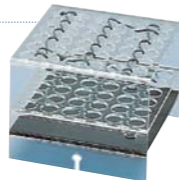
①



Ident. No. 0607200 \$ 130

VX 1 One-hand attachment
For shaking single, non-fixed vessels of 1 – 250 ml.

VX 2	
Dimensions (W x D x H)	140 x 145 x 115 mm
Material	macrolon
Weight	300 g



Ident. No. 0568900 \$ 558

VX 2 Test tube attachment
For up to 36 test tubes or centrifugal tubes with a diameter of 16 mm.

VX 2E	
Dimensions (W x D x H)	210 x 210 x 65 mm
Weight	790 g



Ident. No. 1618100 \$ 557

VX 2E "Eppendorf" attachment
For intensive mixing of up to 64 "microcentrifuge" tubes (1.5 ml).

VX 7	
Dimensions (W x D x H)	410 x 210 x 40 mm
Weight	740 g



Ident. No. 0953300 \$ 404

VX 7 Dish attachment
For careful mixing of culture bottles, Petri dishes, etc.

VX 8	
Dimensions (W x D x H)	265 x 136 x 60 mm
Clamping range	25 – 135 mm
Min. height of vessel	80 mm
Weight	760 g



Ident. No. 0910400 \$ 934

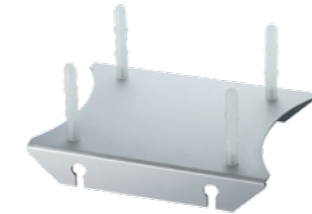
VX 8 Universal attachment
For rapid and secure clamping, e.g. 2 Erlenmeyer flasks up to 500 ml.

VX 8.1 Clamping roll	
Ident. No.	3375400 \$ 86



VX 8.1 Clamping roll
Spare for use with VX 8 universal attachment.

VX 11 Basic holder	
Ident. No.	3627700 \$ 271



VX 11 Basic holder
Attachment for test tube inserts.



Accessories | KS 130

AS 130.1	
Dimensions (W x D x H)	325 x 234 x 88 mm
Set-up plate	220 x 220 mm
Weight	850 g



Ident. No. 8017300 \$ 226

AS 130.1 Universal attachment
For use with various types of vessels by means of universal, infinitely variable clamping rolls.
Included with delivery:
1 x AS 1.30 Basic holder,
3 x AS 1.31 Clamping roll,
6 x AS 1.5 Fastening screw

AS 130.3	
Dimensions (W x D x H)	420 x 270 x 32 mm
Set-up plate	220 x 340 mm
Weight	370 g



Ident. No. 3120000 \$ 223

AS 130.3 Dish attachment
For smooth shaking operations in the low viscosity range, e.g. Petri dishes or culture bottles. With integrated slip-resistant foil (PP).

AS 130.2	
Dimensions (W x D x H)	230 x 230 x 24 mm
Number of fixing clips (volume)	20 x AS 2.1 (25 ml) 12 x AS 2.2 (50 ml) 12 x AS 2.3 (100 ml) 4 x AS 2.4 (250 ml) 4 x AS 2.5 (500 ml)
Weight	650 g



Ident. No. 3115000 \$ 118

AS 130.2 Fixing clip attachment
For processing round flasks, measuring flasks and Erlenmeyer flasks. Please order fixing clips separately.
Accessories:
Fixing clips: AS 2.1, AS 2.2, AS 2.3, AS 2.4, AS 2.5

AS 130.4	
Dimensions (W x D x H)	220 x 230 x 95 mm
Capacity	64
Vessel Ø	10 – 16 mm
Min. height of vessel	80 mm
Min. height of vessel	670 g



Ident. No. 3120300 \$ 226

AS 130.4 Test tube attachment
For intensive shaking, e.g. small tubes, test tubes, cuvettes, centrifuge tubes.



Accessories | HS / KS 260

AS 260.1	
Dimensions (W x D x H)	425 x 335 x 135 mm
Set-up plate	320 x 320 mm
Weight	1600 g



Ident. No.
8017400

\$ 226

AS 260.1 Universal attachment

For various types of vessels. Infinitely variable clamping rolls allow universal adaptation to the vessels.

Included with delivery:

1 x AS 1.60 Basic holder,
4 x AS 1.61 Clamping roll,
8 x AS 1.5 Fastening screw

AS 260.3	
Dimensions (W x D x H)	410 x 370 x 32 mm
Set-up plate	320 x 320 mm
Weight	460 g



Ident. No.
3120600

\$ 124

AS 260.3 Dish attachment

For smooth movement for cell cultures, nutrient media in Petri dishes, culture bottles and vessels with a low center of gravity. With integrated slip-resistant foil (PP).

AS 260.2	
Dimensions (W x D x H)	330 x 330 x 24 mm
Number of fixing clips (volume)	56 x AS 2.1 (25 ml) 23 x AS 2.2 (50 ml) 23 x AS 2.3 (100 ml) 11 x AS 2.4 (250 ml) 9 x AS 2.5 (500 ml) 5 x AS 2.6 (1000 ml)
Weight	1290 g



Ident. No.
3115500

\$ 159

AS 260.2 Fixing clip attachment

For shaking flasks, Erlenmeyer flasks and bottles with a round cross-section (without fixing clips).

Accessories:

Fixing clips: AS 2.1, AS 2.2, AS 2.3, AS 2.4, AS 2.5

AS 260.5	
Dimensions (W x D x H)	334 x 425 x 145 mm
Capacity: (number of separating funnels per volume, pear-shaped)	6 x 50 ml 5 x 100 ml 3 x 250 ml 3 x 500 ml
Weight	1550 g



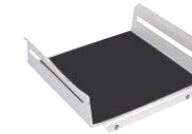
Ident. No.
3120900

\$ 679

AS 260.5 Separating funnel attachment

For shaking out, salting out, extracting, eluting and enriching. The 3 clamping rolls (included in delivery) are height-adjustable for adaption to different separating funnel sizes. The separating funnels are secured with O-rings (6 O-rings included).

AS 1.30	
Dimensions (W x D x H)	252 x 234 x 88 mm



Ident. No.
3148000

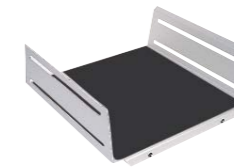
\$ 561

AS 1.30 Basic holder

For use with universal attachment AS 130.1.

Accessories:
AS 1.31, AS 1.5

AS 1.60	
Dimensions (W x D x H)	348 x 335 x 135 mm



Ident. No.
3149000

\$ 319

AS 1.60 Basic holder

For use with universal attachment AS 260.1.

Accessories:
AS 1.61, AS 1.5

AS 1.10	
Dimensions (W x D x H)	480 x 480 x 120 mm



Ident. No.
2339700

\$ 1,184

AS 1.10 Basic holder

For use with universal attachment AS 501.1 and separating funnel attachments AS 501.2, AS 501.3 and AS 501.6.

Accessories:
AS 1.11, AS 1.6, AS 1.7, AS 1.8, AS 1.12, AS 1.13

AS 1.31	
For basic holder	AS 1.30
Length	228 mm

AS 1.61	
For basic holder	AS 1.60
Length	335 mm

AS 1.11	
For basic holder	AS 1.10
Length	410 mm

Clamping roll

AS 1.31
AS 1.61
AS 1.11



Ident. No.
3030500
3030501
2339800

AS 1.31
AS 1.61
AS 1.11

\$ 46
\$ 32
\$ 195



Accessories | HS / KS 501 digital

AS 501.1

Dimensions (W x D x H)	480 x 500 x 120 mm
Set-up plate	420 x 420 mm
Weight	4000 g



Ident. No.
8000200

AS 501.1 Universal attachment

For various types of vessels with a minimum volume of 50 ml. Ideally more than 250 ml. The clamping rolls may be adjusted to two levels.

Included with delivery:

1 x AS 1.10 Basic holder, 6 x AS 1.11 Clamping roll, 12 x AS 1.6 Fastening screw

\$ 1,321

AS 501.2

Dimensions (W x D x H)	480 x 505 x 190 mm
Capacity:	12 x 50 ml
(number of separating funnels per volume, pear-shaped)	10 x 100 ml
	6 x 250 ml
Weight	4180 g



Ident. No.
8000300

AS 501.2 Separating funnel attachment

For shaking out, eluting, extracting, gassing out, dissolving, enriching, etc. Adjustment for the clamping rolls is infinitely variable, the set-up height can be changed by means of clamping devices.

Included with delivery:

1 x AS 1.10, 6 x AS 1.11, 6 x AS 1.6, 6 x AS 1.7

\$ 1,388

AS 501.3

Dimensions (W x D x H)	480 x 505 x 190 mm
Capacity:	4 x 500 ml
(number of separating funnels per volume, pear-shaped)	3 x 1000 ml
	2 x 2000 ml
Weight	3720 g



Ident. No.
8000400

AS 501.3 Separating funnel attachment

Same features as AS 501.2.

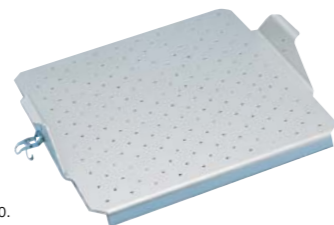
Included with delivery:

1 x AS 1.10, 4 x AS 1.11, 4 x AS 1.6, 4 x AS 1.7

\$ 1,313

AS 501.4

Dimensions (W x D x H)	475 x 460 x 95 mm
Number of fixing clips (volume)	110 x AS 2.1 (25 ml)
	55 x AS 2.2 (50 ml)
	35 x AS 2.3 (100 ml)
	16 x AS 2.4 (250 ml)
	12 x AS 2.5 (500 ml)
	8 x AS 2.6 (1000 ml)
Weight	2640 g



Ident. No.
2341100

AS 501.4 Fixing clip attachment

For shaking flasks, Erlenmeyer flasks and pear-shaped flasks (without fixing clips).

Accessories:

Fixing clips : AS 2.1, AS 2.2, AS 2.3, AS 2.4, AS 2.5

\$ 1,260

AS 501.5

Dimensions (W x D x H)	450 x 450 x 45 mm
Set-up plate	420 x 420 mm
Weight	1120 g



Ident. No.
2339600

AS 501.5 Dish attachment

For smoothly shaking dishes, but also for smooth mixing in vessels with a large, flat bottom (wide-necked Erlenmeyer flasks and beakers). A plastic foil with mild adhesive prevents the vessel from slipping.

\$ 352

AS 501.6

Dimensions (W x D x H)	480 x 505 x 225 mm
Capacity: (number of separating funnels per volume, pear-shaped)	4 x 1000 ml
Weight	5500 g



Ident. No.
8000500

AS 501.6 Separating funnel attachment

Same features as AS 501.2. This attachment will hold 4 x 1000 ml separating funnels.

Included with delivery:

1 x AS 1.10, 4 x AS 1.6, 4 x AS 1.12, 8 x AS 1.13

\$ 2,296

STICKMAX

Dimensions (W x D x H)	200 x 200 mm
Permissible ambient temperature	5 – 80 °C
Max. speed	300 rpm
Number of adhesive mats per shaker	KS 130 1 pcs.
	KS/HS 260 3 pcs.
	KS/HS 501 4 pcs.
	KS 3000 i 2 pcs.
	KS 4000 i 4 pcs.



Ident. No.
3920000

STICKMAX

Universal adhesive mat for KS 130, KS/HS 260, KS/HS 501, KS 3000 and KS 4000 shakers.

- Ideal for frequently changing vessel types and sizes
- Self-adhesive
- Devices can be easily removed by side tilting movement
- Suitable for disinfection
- Peel-away strength required: 5 N/cm²

\$ 109



Accessories | HS / KS 501 digital and VORTEX Shakers



AS 1.5 Fastening screw

Fastening screw for the universal attachments AS 130.1, AS 260.1 and the separating funnel attachment AS 260.5. Two AS 1.5 fastening screws are required for fastening a clamping roll onto the corresponding basic holder.

Ident. No.
2979400

\$ 7



AS 1.7 Clamping device

Two AS 1.6 and two AS 1.7 clamping devices are required for fastening two clamping rolls one above the other (for clamping separating funnels). For basic holder AS 1.10 only.

Ident. No.
1269200

\$ 95



AS 1.6 Fastening screw

Two AS 1.6 clamping devices are required for fastening a clamping roll to the corresponding basic holder (for basic holder AS 1.10 only).

Ident. No.
1268400

\$ 77



AS 1.8 Supporting clamping device

Two AS 1.6 clamping devices and two AS 1.8 supporting clamping devices are required if a clamping roll is to be attached at a higher position (e.g. for fixing a vessel which has a higher point of gravity). For basic holder AS 1.10 only.

Ident. No.
1268900

on request

AS 1.12 Supporting bar

For attaching two AS 1.13 ground section holders for fixing 1000 ml separating funnels. For basic holder AS 1.10 only.
Accessories: AS 1.13



Ident. No.
2594500

Length 437 mm

\$ 213



AS 1.13 Ground section holder

For attaching separating funnels with ground opening NS 29 (2 x AS 1.13 necessary per separating funnel). For basic holder AS 1.10 only.

Ident. No.
2597000

\$ 202

For flask volume	AS 2.1	AS 2.2	AS 2.3	AS 2.4	AS 2.5	AS 2.6
25 ml						
50 ml						
100 ml						
200 ml / 250 ml						
500 ml						
1000 ml						

Ident. No.	AS 2.1	AS 2.2	AS 2.3	AS 2.4	AS 2.5	AS 2.6
1	1234300	1234400	1234500	1234600	1234700	3819300
	\$ 21	\$ 21	\$ 21	\$ 39	\$ 39	\$ 39

- AS 2.1 Fixing clip
- AS 2.2 Fixing clip
- AS 2.3 Fixing clip
- AS 2.4 Fixing clip
- AS 2.5 Fixing clip
- AS 2.6 Fixing clip



VG 3.1 Standard attachment

Standard attachment for reagent glasses / small vessels (continuous / touch operation), included with delivery.

Ident. No.
3341201

\$ 21



VG 3.2 One-hand attachment

One-hand attachment, 88 mm, round, with rubber insert (continuous / touch operation).

Ident. No.
3342300

\$ 27



VG 3.21 Rubber pad

For use with VG 3.2 One-hand attachment.

Ident. No.
4206500

on request

VG 3.3 Universal attachment

Universal attachment, 150 mm, with rubber insert (continuous operation).

Ident. No.
3342400

\$ 27



VG 3.31 Test tube attachment*

For 54 Eppendorf tubes (continuous operation).

Ident. No.
3344300

\$ 71

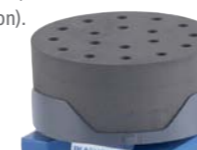


VG 3.32 Test tube attachment*

For 18 reagent glasses, 10 mm (continuous operation).

Ident. No.
3343900

\$ 39

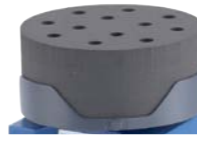


VG 3.33 Test tube attachment*

For 12 reagent glasses, 12 mm (continuous operation).

Ident. No.
3344000

\$ 36



VG 3.34 Test tube attachment*

For 8 reagent glasses, 16 mm (continuous operation).

Ident. No.
3344100

\$ 36

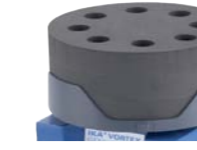


VG 3.35 Test tube attachment*

For 8 reagent glasses, 20 mm (continuous operation).

Ident. No.
3344200

\$ 36

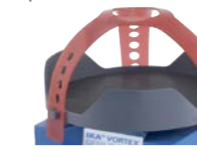


VG 3.36 Erlenmeyer flask attachment*

For 1 Erlenmeyer / round flask from 100 to 250 ml (continuous operation).

Ident. No.
3342100

\$ 66



VG 3.37 Microtiter plate attachment*

For 1 standard microtiter plate (continuous operation).

Ident. No.
3344400

\$ 36



MS 3.1 Standard attachment

For test tubes and small vessels up to Ø 50 mm, included with the minishakers MS 3 basic and MS 3 digital.

Ident. No.
3426300

\$ 42



MS 3.3 Universal attachment

For various foam inserts, included with the minishakers MS 3 basic and MS 3 digital.

Ident. No.
3426600

\$ 42



MS 3.4 Microtiter plate attachment

For use with a microtiter plate, included with the minishaker MS 3 digital.

Ident. No.
3426400

\$ 56



MS 3.5 PCR plate attachment

For holding PCR plates, 96-well. Includes holder and insert.

Ident. No.
3428000

\$ 158



MS 1.21 One-hand insert

For inserting into the universal attachment, included with the minishakers MS 3 basic and MS 3 digital.

Ident. No.
L001540

\$ 20



MS 1.31 Test tube insert

For inserting into universal attachment, for 14 test tubes Ø 10 mm, material: ethylvinyl-acetate.

Ident. No.
L001840

\$ 39



MS 1.32 Test tube insert

For inserting into the universal attachment, for 6 test tubes Ø 12 mm. Material: ethylvinyl-acetate. Included with the minishakers MS 3 digital.

Ident. No.
L001850

\$ 28



MS 1.33 Test tube insert

For inserting into the universal attachment, for 4 test tubes Ø 16 mm. Material: ethylvinyl-acetate.

Ident. No.
L001860

\$ 27



MS 1.34 Test tube insert

For inserting into the universal attachment, for any number of bore holes. Material: ethylvinyl-acetate.

Ident. No.
L001830

\$ 21



* For VG 3.3 Universal attachment



Erlenmeyer Flasks										
IKA® Shaker	Attachment Combination	25 ml	50 ml	100 ml	250 ml	500 ml	1000 ml	2000 ml	3000 ml	5000 ml
KS 130	STICKMAX	23	15	6	5	4	1	1**		0
KS 130	AS 130.1	15	12	6	2	2	1	1**		0
KS 130	required clamping rolls	4	4	3	2	2	2	2		0
KS 130	AS 130.2 Fixing Clip Attachment	12	12	8	4	4	1	0		0
KS 260	STICKMAX	25	16	9	10	9	5	2		1
KS 260	AS 260.1	21	18	15	8	6	3	1		1
KS 260	required clamping rolls	4	4	4	4	4	3	2		2 (4)
KS 260	AS 260.2 Fixing Clip Attachment	31	28	16	10	8	5	4		0
KS 501	STICKMAX	25	16	9	25	16	9	5	1	1
KS 501	AS 501.1	50	40	30	16	12	9	4	4	1
KS 501	required clamping rolls	6	6	6	5	4	6	3	3	2
KS 501	AS 501.4 Fixing Clip Attachment	50	35	30	16	12	8	5	0	0
KS 4000 i control	STICKMAX	25	16	9	29	16	9	4	1	0
KS 4000 i control	AS 4000.1	45	40	30	16	9	8	4	2	0
KS 4000 i control	required clamping rolls	6	6	6	8	4	4	4	2	0
KS 4000 i control	AS 4000.2 Fixing Clip Attachment	55	38	25	16	11	7	4	0	0

Volumetric Flasks										
IKA® Shaker	Attachment Combination	25 ml	50 ml	100 ml	200 ml	250 ml	500 ml	1000 ml	2000 ml	
KS 130	STICKMAX	25	16	9	5	5	2	1**	**	
KS 130	AS 130.1	16	12	6	3	2	2	0	0	
KS 130	required clamping rolls for AS 130.1	5	4	3	3	2	2	0	0	
KS 130	AS 130.2	15	8	8	4	4	4	1	0	
KS 260	STICKMAX	49	36	25	10	10	9	4	**	
KS 260	AS 260.1 max. quantity	32	24	20	12	16	6	2	**	
KS 260	required clamping rolls for AS 260.1	5	5	7	6	6	4	2	**	
KS 260	AS 260.2	30	29	23	9	9	8	4	3	
KS 501	STICKMAX	100	64	36	20	16	9	20	**	
KS 501	AS 501.1 + 10 AS 1.11 Clamping Roll + 20 AS 1.6 Fastening Screw	70	56	30	25	20	12	6	**	
KS 501	required clamping rolls for AS 501.1	8	14	10	6	5	6	4	**	
KS 501	AS 501.2	55	50	35	20	20	11	8	5	
KS 4000 i control	STICKMAX	100	64	36	20	20	16	6*	0	
KS 4000 i control	AS 4000.1	70	40	24	20	20	12	6	0	
KS 4000 i control	required clamping rolls for AS 4000.1	8	6	5	8	8	6	4	0	
KS 4000 i control	AS 4000.2	52	49	30	19	19	11	6	0	



Beakers (high form)												
IKA® Shaker	Attachment Combination	25 ml	50 ml	100 ml	150 ml	250 ml	400 ml	600 ml	800 ml	1000 ml	2000 ml	3000 ml
KS 130	STICKMAX	25	16	9	9	9	5	4	4	4*	1*	1*
KS 130	AS 130.1 max. quantity	18	15	8	6	6	3	2	2	2	1*	1*
KS 130	required clamping rolls for AS 130.1	4	3	3	3	3	2	2	2	2	2	2
KS 260	STICKMAX	64	36	25	25	16	9	9	9	9	4*	4*
KS 260	AS AS 260.1 max. quantity	45	28	18	15	15	8	6	6	6	2	2
KS 260	required clamping rolls for AS 260.1	6	5	4	4	4	3	3	3	3	2	2
KS 501	STICKMAX	121	81	49	36	36	25	16	16	9	9	4
KS 501	AS 501.1 max. quantity	96	90	40	35	24	20	12	12	12	12	4
KS 501	required clamping rolls for AS 501.1	9	8	5	5	5	4	4	4	4	3	4
KS 4000 i control	STICKMAX	121	81	49	36	36	25	16	16	9	9	4
KS 4000 i control	AS 4000.1 max. quantity	77	48	35	30	24	20	12	12	12	6	4
KS 4000 i control	required clamping rolls for AS 4000.1	8	7	6	5	5	4	4	4	4	3	3

* Limited recommendation! ** Not recommended!

Beakers (low form)														
IKA® Shaker	Attachment Combination	25 ml	50 ml	100 ml	150 ml	250 ml	400 ml	600 ml	800 ml	1000 ml	2000 ml	3000 ml	5000 ml	10000 ml
KS 130	STICKMAX	25	16	9	9	5	4	4	4	2	1	1*	1*	**
KS 130	AS 130.1 max. quantity	15	8	8	8	4	2	2	2	2	2	1*	0	**
KS 130	required clamping rolls for AS 130.1	4	3	3	3	3	2	2	2	2	2	2		
KS 260	STICKMAX	64	36	25	16	10	9	9	6	6	4	2	1	1*
KS 260	AS 260.1 max. quantity	32	24	15	12	8	6	6	6	2	2	2	1	1*
KS 260	required clamping rolls for AS 260.1	5	5	4	4	3	3	3	3	2	2	2	2	2
KS 501	STICKMAX	100	64	49	36	25	16	16	10	9	9	4	4	1
KS 501	AS 501.1 max. quantity	70	48	42	30	20	16	12	9	9	6	4	1	1
KS 501	required clamping rolls for AS 501.1	8	7	6	5	4	4	3	3	3	3	3	2	2
KS 4000 i control	STICKMAX	100	64	49	36	25	16	16	10	9	9	4	4	1*
KS 4000 i control	AS 4000.1 max. quantity	70	48	30	20	20	12	12	9	6	4	4	2	1*
KS 4000 i control	required clamping rolls for AS 4000.1	8	7	6	5	5	4	4	4	3	3	3	2	2

* Limited recommendation! ** Not recommended!



labworldsoft®

IKA® laboratory software labworldsoft® is an advanced software for all your laboratory needs. With the help of this software, you can network up to 64 laboratory devices via one PC. All test parameters can be documented ensuring complete automation of your laboratory experiments. Measurements and processes may be run independently. Long waits and processing times are reduced, which increases productivity.



Comprehensive Worldwide Service!

Our dedicated team of engineers provides comprehensive worldwide technical service. Please feel free to contact your dealers or IKA® directly in case of any service queries. Hotline: In the event of an equipment malfunction or technical questions regarding devices and spare parts: call +1 800 733-3037



IKA® Application Support

Our Application Center spans 400 sqm and offers modern facilities for presenting and testing lab devices and processes. This brings us even closer to our customers and improves our service. Here, prospective buyers and customers can test out processes that involve stirring, shaking, dispersing, grinding, heating, analyzing and distilling. In addition, it also further extends the opportunity to test your own devices and to develop new models.



Prices valid until 31st of December 2014
All prices exclusive to VAT
Subject to alteration of prices
Subject to technical changes

IKA®+

Ordering made easy!

For more information about our products and to place your order, please visit:

www.ika.com

201407_Shakers_brochure_EN_USD

IKA®-Works, Inc.
2635 Northchase Pkwy SE
Wilmington, NC 28405-7419
USA

Tel. +1 800-733-3037
Tel. +1 910 452-7059
Fax +1 910 452-7693

sales@ika.net
www.ika.com



designed
to work perfectly

FAQ

Is it possible to operate using IKA® laboratory software?

labworldsoft® is an advanced software for all your laboratory needs. With the help of this software, you can network up to 64 laboratory devices via one PC. All test parameters can be documented ensuring complete automation of your laboratory experiments. Measurements and processes may be run independently. Long waits and processing times are reduced, which increases productivity.

Can I place my shaker in a CO₂ chamber or in an incubator?

If the relative humidity does not exceed 80% and the temperature stays within 5 – 40 °C (partially until 50°C), the shaker can be used in a CO₂ chamber or an incubator.

Which IKA® shaker of the HS/KS series starts automatically after a power failure?

KS 130, KS 260, KS 3000 and KS 4000 start automatically in certain modes (C, C+B) after a power failure.

What kind of vortex shakers does IKA® offer?

(They should have a touch function, but also come equipped with various attachments, e.g. for microtiter plates) The Lab Dancer, MS 3 basic, digital VORTEX 4 and VORTEX 3 are the appropriate devices. MS 3 basic, digital and VORTEX Genius 3 have a variety of attachments for most variable shaking tasks.

Is it possible to shake deepwell plates with the MTS 2/4?

No, deepwell plates cannot be fixed properly; their center of gravity is simply too high.



www.facebook.com/IKAworldwide

